

**CAMERIO IR Domes**



Vandal Resistant



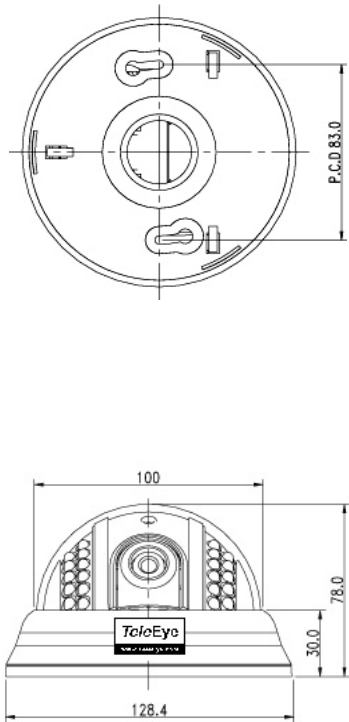
3 Axis Mount



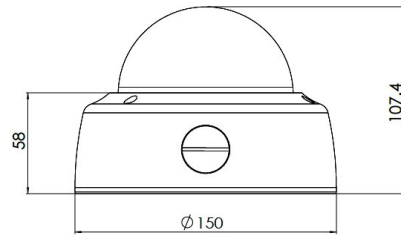
Ultra Hi-resolution

	IR Dome Camera		Outdoor IR Dome Camera		Outdoor IR Dome Camera	Outdoor IR Dome Camera	Outdoor IR Dome Camera
Model	DF183	DF187	DF263	DF267	DF288	DF292	DF295
Pick Up Device	1/3" interline transfer CCD		1/3" interline transfer CCD		1/3" interline transfer CCD	1/3" interline transfer CCD	1/3" interline transfer CCD
Horizontal Resolution	380 TVL	520 TVL	420 TVL	540 TVL	540 TVL	420 TVL	540 TVL
Lens	3.6mm		3.6mm		2.9mm ~ 10mm (Aspherical IR lens)	3.6mm	3.6mm
View Angle ( Horizontal )	68°		68°		28.8° ~ 94.6°	68°	68°
Auto-iris Lens	-		-		Yes	-	-
Auto IR-cut Filter	-		-		Yes	-	-
IR LED / Effective Range	22 infrared LEDs / ~15m		24 infrared LEDs / ~15m		10 infrared LEDs / ~15m	24 infrared LEDs / ~15m	36 infrared LEDs / ~20m
Min. Illumination	0.1 Lux / F1.2 ( IR OFF ) 0.0 Lux ( IR ON )	0.5 Lux / F1.2 ( IR OFF ) 0.0 Lux ( IR ON )	0.5 Lux / F1.2 ( IR OFF ) 0.0 Lux ( IR ON )	0.1 Lux / F1.2 ( IR OFF ) 0.0 Lux ( IR ON )	0.13 Lux / F1.3 ( IR OFF ) 0.0 Lux ( IR ON & IR filter removed )	0.5 Lux / F1.2 ( IR OFF ) 0.0 Lux ( IR ON )	0.1 Lux / F1.2 ( IR OFF ) 0.0 Lux ( IR ON )
Weather Proof Standard	-		IP66		IP66	IP66	IP66
Electronic Shutter	1/50 ( 1/60 ) to 1/100,000 sec		1/50 ( 1/60 ) to 1/100,000 sec		1/50 ( 1/60 ) sec	1/50 ( 1/60 ) to 1/100,000 sec	1/50 ( 1/60 ) to 1/100,000 sec
Electronic Shutter Control	Built-in		Built-in		On / Off switchable	Built-in	Built-in
Back Light Compensation	Built-in		-		On / Off switchable	-	-
S/N Ratio	More than 48dB ( AGC off )	More than 45dB ( AGC off )	More than 48dB ( AGC off )		More than 50dB ( AGC off )	More than 48dB ( AGC off )	More than 48dB ( AGC off )
White Balance	Auto		Auto		Auto	Auto	Auto
Video Output	1.0 Vp-p, 75Ω		1.0 Vp-p, 75Ω		1.0 Vp-p, 75Ω	1.0 Vp-p, 75Ω	1.0 Vp-p, 75Ω
Auto Gain Control	Yes		Yes		On / Off switchable	Yes	Yes
Power Source	DC 12V / 160 mA ( IR OFF ) 340 mA ( IR ON )	DC 12V / 160 mA ( IR OFF ) 380 mA ( IR ON )	DC 12V / 200 mA ( IR OFF ) 400 mA ( IR ON )		DC 12V / 200 mA ( IR OFF ) 500 mA ( IR ON )	DC 12V / 200 mA ( IR OFF ) 400 mA ( IR ON )	DC 12V / 200 mA ( IR OFF ) 500 mA ( IR ON )
Operating Temperature	-20°C ~ +50°C	-10°C ~ +50°C	-20°C ~ +50°C		-10°C ~ +50°C	-20°C ~ +50°C	-20°C ~ +50°C
Humidity	< 90%		-		-	-	-
Weight ( g )	250		850	840	950	410	820

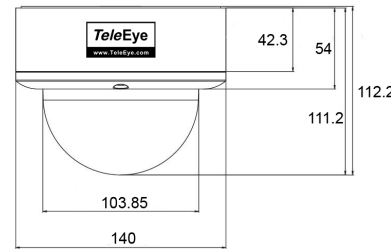
### DF183 / DF187



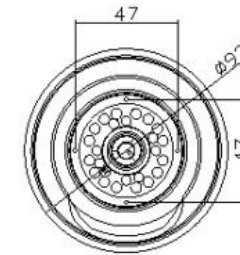
### DF263 / DF267



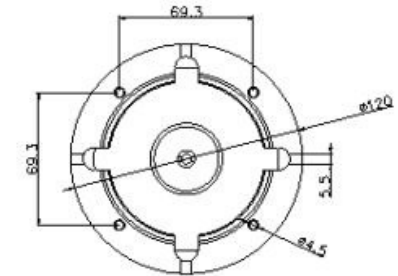
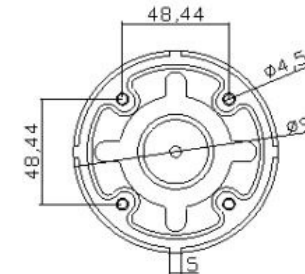
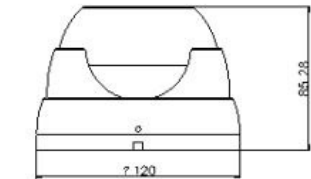
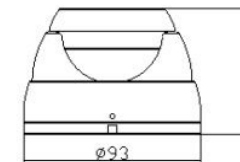
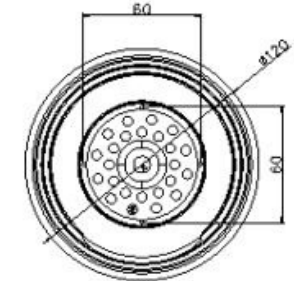
### DF288



### DF292



### DF295



## TeleEye Group

### Signal Communications Limited

Units 202-203, 2/F, Laford Centre, 838 Lai Chi Kok Road, Kowloon, Hong Kong  
 International: (852) 2995 5996 Hong Kong: (852) 2995 5992 Fax: (852) 2995 5901  
 Email: info@TeleEye.com Web: www.TeleEye.com

**TeleEye Europe Ltd.**  
 4 Maidenhead Enterprise  
 Centre, Cordwallis Street,  
 Maidenhead,  
 Berkshire SL6 7BE,  
 United Kingdom  
 Tel: (44) 1628 776061  
 Fax: (44) 1628 407399  
 Email: info@TeleEye.co.uk

**TeleEye (S) Pte Ltd.**  
 10 UBI Crescent,  
 #06-09 Lobby A UBI Techpark  
 Singapore 408564  
 Tel: (65) 6745-3921  
 Fax: (65) 6742-1965  
 Email: sales@TeleEye.com.sg

**TeleEye Digital Technology  
 (Shenzhen) Co., Ltd.**  
 Room A602,  
 Shenzhen Virtual University Park,  
 Shenzhen Hi-Tech Industrial  
 Park,  
 Shenzhen, China  
 Tel: (86) 755-2671-2122  
 Fax: (86) 755-2671-2287  
 Email: info@TeleEye.com.cn

**TeleEye Hrvatska**  
 Kranjčevićeva 16  
 52100 Pula, Croatia  
 Tel: (385) 52-383-102  
 Fax: (385) 52-383-101  
 Email: info@TeleEye.hr

**TeleEye Philippines Inc**  
 291-H Del Monte Avenue  
 Quezon City  
 Metro Manila, Philippines  
 Tel: (63) 2-3650897  
 Fax: (63) 2-3651446  
 Email: contact@TeleEye.com.ph

**TeleEye (Mauritius) Ltd.**  
 Lamberty Street, Vacoas –  
 Mauritius  
 Tel: (230) 686 5238  
 Fax: (230) 698 2179  
 Email: info@TeleEye.com.mu

**TeleEye (South Africa) (Pty) Ltd**  
 Unit 4, No. 4 Homestead Avenue,  
 Bryanston  
 P O Box 2375, Saxonwold 2132  
 South Africa  
 Tel: (27) 11 557 9200  
 Fax: (27) 11 706 3847  
 Email: info@TeleEye.co.za

**Companhia TeleEye  
 (Macau) Limitada**  
 D'Assumpção, n°180,  
 Edifício Tong Nam Ah  
 Centro Comercial, 10°  
 andar J, em Macau  
 Tel: (853) 2857 5933  
 Fax: (853) 2857 5911  
 Email:  
 info@TeleEye.com.mo